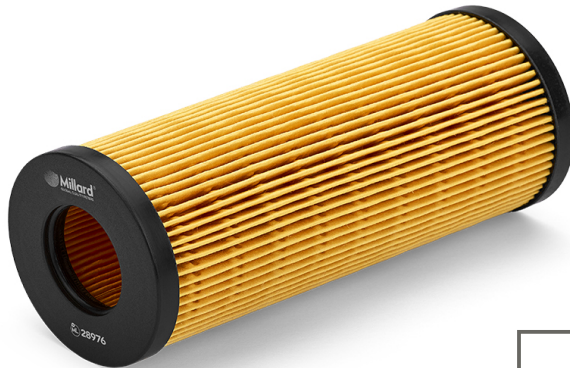


# ML 28976 Millard Oil Filter

Catalog Europe, 23/11/2024



For updated information visit <http://mldr.es/ML-28976>

## DIMENSIONS

H (Height):	155 mm
OD (Outer Diameter):	65 mm
ID (Inner Diameter):	31 mm
ID2 (Inner Diameter):	31 mm

## Gaskets:

1 Unit/s (OD/ID)	82 mm / 75 mm
1 Unit/s (OD/ID)	12 mm / 7 mm
1 Unit/s (OD/ID)	26 mm / 19 mm

## PRESENTATION

UNITS PER BOX:	24
WEIGHT:	3.0 Kg
VOLUME:	0.02 cbm
EAN13:	5055148201272
ITF14:	85055148201278



## CROSS REFERENCES

<b>BMW</b>	11 42 7 787 697	<b>KNECHT/MAHLE</b>	OX 368D1
<b>BMW</b>	11 42 8 513 377	<b>PBR</b>	AC-8065
<b>COOPERSFIAAM</b>	FA5636ECO	<b>UFI</b>	25.021.00
<b>FIAT</b>	55198675		

## APPLICATIONS (EUROPE)

### ALPINA

Serie	Model	Engine	Kw	HP	CV	Start	Finish
D3 (E90)	2.0	M47 D20 (204D4)	147	197	200	2005	2008
D3 Station Wagon (E91)	2.0	M47 D20 (204D4)	147	197	200	2005	2008

### BMW

Serie	Model	Engine	Kw	HP	CV	Start	Finish
1 (E87)	118 d	M47 D20 (204D4)	90	121	122	2004	2007
1 (E87)	120 d	M47 D20 (204D4)	110	147	149	2004	2007
1 (E87)	120 d	N47 D20 A; M47 D20	120	161	163	2004	2011
1 (E87)	120 i	N43 B20 A	120	161	163	2007	2011
3 (E46)	318 d	M47 D20 (204D4)	85	114	115	2003	2005
3 (E46)	320 d	M47 D20 (204D4)	110	147	149	2001	2005
3 (E46)	330 d	M57 D30 (306D2)	150	201	204	2003	2005
3 (E46)	330 xd	M57 D30 (306D2)	150	201	204	2002	2004
3 (E90)	318 d	M47 D20 (204D4)	90	121	122	2005	2007
3 (E90)	320 d	M47 D20 (204D4)	110	147	149	2004	2007
3 (E90)	320 d	N47 D20 A; N47 D20	120	161	163	2004	2011
3 (E90)	320 d xDrive	N47 D20 C	120	161	163	2008	2011
3 (E90)	325 d	M57 D30 (306D3)	145	194	197	2006	2010
3 (E90)	330 d	M57 D30 (306D3)	170	228	231	2005	2008
3 (E90)	330 xd	M57 D30 (306D3)	170	228	231	2005	2008
3 (E90)	335 d	M57 D30 (306D5)	210	282	285	2006	2011
3 Compact (E46)	318 td	M47 D20 (204D4)	85	114	115	2003	2005
3 Compact (E46)	320 td	M47 D20 (204D4)	110	147	149	2001	2005
3 Coupe (E46)	320 Cd	M47 D20 (204D4)	110	147	149	2003	2006

<b>BMW</b>							
<i>Serie</i>	<i>Model</i>	<i>Engine</i>	<i>Kw</i>	<i>HP</i>	<i>CV</i>	<i>Start</i>	<i>Finish</i>
3 Coupe (E46)	330 Cd	M57 D30 (306D2)	150	201	204	2003	2006
3 Coupe (E92)	325 d	M57 D30 (306D3)	145	194	197	2007	2010
3 Coupe (E92)	330 d	M57 D30 (306D3)	170	228	231	2006	2008
3 Coupe (E92)	330 xd	M57 D30 (306D3)	170	228	231	2006	2008
3 Coupe (E92)	335 d	M57 D30 (306D5)	210	282	285	2006	2013
3 Descapotable (E46)	320 Cd	M47 D20 (204D4)	110	147	149	2005	2007
3 Descapotable (E46)	330 Cd	M57 D30 (306D2)	150	201	204	2005	2007
3 Descapotable (E93)	320 d	N47 D20 C	120	161	163	2008	2013
3 Descapotable (E93)	325 d	M57 D30 (306D3)	145	194	197	2007	2010
3 Descapotable (E93)	330 d	M57 D30 (306D3)	170	228	231	2007	2013
3 Touring (E46)	318 d	M47 D20 (204D4)	85	114	115	2003	2005
3 Touring (E46)	320 d	M47 D20 (204D4)	110	147	149	2001	2005
3 Touring (E46)	330 d	M57 D30 (306D2)	150	201	204	2003	2005
3 Touring (E46)	330 xd	M57 D30 (306D2)	150	201	204	2002	2005
3 Touring (E91)	318 d	M47 D20 (204D4)	90	121	122	2005	2007
3 Touring (E91)	320 d	M47 D20 (204D4)	110	147	149	2004	2007
3 Touring (E91)	320 d	N47 D20 A; N47 D20	120	161	163	2005	2012
3 Touring (E91)	320 d xDrive	N47 D20 C	120	161	163	2009	2012
3 Touring (E91)	325 d	M57 D30 (306D3)	145	194	197	2006	2012
3 Touring (E91)	330 d	M57 D30 (306D3)	170	228	231	2004	2008
3 Touring (E91)	330 xd	M57 D30 (306D3)	170	228	231	2005	2012
3 Touring (E91)	335 d	M57 D30 (306D5)	210	282	285	2006	2012
5 (E60)	520 d	M47 D20 (204D4)	110	147	149	2005	2007
5 (E60)	520 d	N47 D20 A; N47 D20	120	161	163	2005	2009
5 (E60)	525 d	M57 D25 (256D2)	120	161	163	2004	2010
5 (E60)	525 d	M57 D25 (256D2)	130	174	177	2004	2010
5 (E60)	525 d	M57 D30 (306D3)	145	194	197	2007	2010
5 (E60)	525 d xDrive	M57 D30 (306D3)	145	194	197	2008	2009
5 (E60)	525 xd	M57 D30 (306D3)	145	194	197	2007	2008
5 (E60)	530 d	M57 D30 (306D2)	160	214	217	2002	2005
5 (E60)	530 d	M57 D30 (306D2); M57	155	208	211	2002	2009
5 (E60)	530 d	M57 D30 (306D3)	170	228	231	2005	2007
5 (E60)	530 d	M57 D30 (306D3)	173	232	235	2007	2009
5 (E60)	530 d xDrive	M57 D30 (306D3)	173	232	235	2007	2009
5 (E60)	530 xd	M57 D30 (306D3)	170	228	231	2005	2007
5 (E60)	530 xd	M57 D30 (306D3)	173	232	235	2007	2007
5 (E60)	535 d	M57 D30 (306D4)	200	268	272	2004	2010
5 (E60)	535 d	M57 D30 (306D5)	210	282	285	2007	2010
5 Touring (E61)	520 d	M47 D20 (204D4)	110	147	149	2005	2007
5 Touring (E61)	520 d	N47 D20 A; N47 D20	120	161	163	2005	2010
5 Touring (E61)	525 d	M57 D25 (256D2)	120	161	163	2004	2007
5 Touring (E61)	525 d	M57 D25 (256D2)	130	174	177	2004	2007
5 Touring (E61)	525 d	M57 D30 (306D3)	145	194	197	2007	2010
5 Touring (E61)	525 d xDrive	M57 D30 (306D3)	145	194	197	2008	2010
5 Touring (E61)	525 xd	M57 D30 (306D3)	145	194	197	2007	2008
5 Touring (E61)	530 d	M57 D30 (306D2)	160	214	217	2004	2005
5 Touring (E61)	530 d	M57 D30 (306D3)	170	228	231	2005	2007
5 Touring (E61)	530 d	M57 D30 (306D3)	173	232	235	2007	2010
5 Touring (E61)	530 d xDrive	M57 D30 (306D3)	173	232	235	2007	2010
5 Touring (E61)	530 xd	M57 D30 (306D3)	170	228	231	2005	2007
5 Touring (E61)	530 xd	M57 D30 (306D3)	173	232	235	2007	2007
5 Touring (E61)	535 d	M57 D30 (306D4)	200	268	272	2004	2010
5 Touring (E61)	535 d	M57 D30 (306D5)	210	282	285	2007	2010
6 (E63)	635 d	M57 D30 (306D5)	210	282	285	2007	2010
6 Descapotable (E64)	635 d	M57 D30 (306D5)	210	282	285	2007	2010
7 (E65; E66; E67)	730 d	M57 D30 (306D2)	160	214	217	2002	2005
7 (E65; E66; E67)	730 d	M57 D30 (306D2); M57	155	208	211	2003	2008
7 (E65; E66; E67)	730 Ld	M57 D30 (306D3)	170	228	231	2005	2008

**DIMENSIONS**

H (Height):	155 mm
OD (Outer Diameter):	65 mm
ID (Inner Diameter):	31 mm
ID2 (Inner Diameter):	31 mm
<b>Gaskets:</b>	
1 Unit/s (OD/ID)	82 mm / 75 mm
1 Unit/s (OD/ID)	12 mm / 7 mm
1 Unit/s (OD/ID)	26 mm / 19 mm

**PRESENTATION**

<b>UNITS PER BOX:</b>	24
<b>WEIGHT:</b>	3.0 Kg
<b>VOLUME:</b>	0.02 cbm
<b>EAN13:</b>	5055148201272
<b>ITF14:</b>	85055148201278




**28976 Millard Oil Filter**
**BMW**

Serie	Model	Engine	Kw	HP	CV	Start	Finish
7 (E65; E66; E67)	745 d	M67 D44 (448D1)	220	295	299	2005	2005
7 (E65; E66; E67)	745 d	M67 D44 (448D1)	242	324	329	2005	2008
X3 (E83)	2.0 d	M47 D20 (204D4)	110	147	149	2004	2007
X3 (E83)	3.0 d	M57 D30 (306D2)	150	201	204	2004	2005
X3 (E83)	3.0 d	M57 D30 (306D3)	160	214	217	2005	2008
X3 (E83)	3.0 sd	M57 D30 (306D5)	210	282	285	2006	2008
X3 (E83)	xDrive 30 d	M57 D30 (306D3)	155	208	211	2008	2010
X3 (E83)	xDrive 30 d	M57 D30 (306D3)	160	214	217	2008	2010
X3 (E83)	xDrive 35 d	M57 D30 (306D5)	210	282	285	2008	2011
X5 (E53)	3.0 d	M57 D30 (306D2)	160	214	217	2003	2006
X5 (E70)	3.0 3.0d	M57 D30 (306D3)	155	208	211	2007	2008
X5 (E70)	3.0 d	M57 D30 (306D3)	173	232	235	2006	2008
X5 (E70)	3.0 sd	M57 D30 (306D5)	210	282	285	2007	2008
X5 (E70)	xDrive 30 d	M57 D30 (306D3)	173	232	235	2008	2010
X5 (E70)	xDrive 30 d	N57 D30 A; M57 D30	155	208	211	2008	2013
X5 (E70)	xDrive 35 d	M57 D30 (306D5)	210	282	285	2008	2013
X6 (E71; E72)	xDrive 30 d	M57 D30 (306D3)	173	232	235	2008	2010
X6 (E71; E72)	xDrive 35 d	M57 D30 (306D5)	210	282	285	2008	2010

**FIAT**

Serie	Model	Engine	Kw	HP	CV	Start	Finish
CROMA (194 )	2.4 D Multijet	939 A3.000	147	197	200	2005	2011

**DIMENSIONS**

H (Height):	155 mm
OD (Outer Diameter):	65 mm
ID (Inner Diameter):	31 mm
ID2 (Inner Diameter):	31 mm

**Gaskets:**

1 Unit/s (OD/ID)	82 mm / 75 mm
1 Unit/s (OD/ID)	12 mm / 7 mm
1 Unit/s (OD/ID)	26 mm / 19 mm

**PRESENTATION**

UNITS PER BOX:	24
WEIGHT:	3.0 Kg
VOLUME:	0.02 cbm
EAN13:	5055148201272
ITF14:	85055148201278

