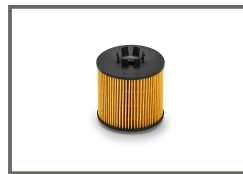


# ML 52149 Millard Oil Filter

Catalog Europe, 05/04/2025



## DIMENSIONS

H (Height):	73 mm
OD (Outer Diameter):	66 mm
ID (Inner Diameter):	9 mm
ID2 (Inner Diameter):	33 mm

## Gaskets:

1 Unit/s (OD/ID)	78 mm / 71 mm
------------------	---------------

## PRESENTATION

UNITS PER BOX:	24
WEIGHT:	1.9 Kg
VOLUME:	0.01 cbm
EAN13:	5055148201142
ITF14:	85055148201148



For updated information visit <http://mldr.es/ML-52149>

## CROSS REFERENCES

<b>HENGST</b>	E320H01 D84	<b>VAG</b>	03C 115 577 A
<b>KNECHT/MAHLE</b>	OX 341D	<b>VW</b>	03C 115 577A
<b>VAG</b>	03C 115 562		

## APPLICATIONS (EUROPE)

### AUDI

Serie	Model	Engine	Kw	HP	CV	Start	Finish
A3 (8P1)	1.4 TFSI	CAXC; CMSA	92	123	125	2007	2012
A3 (8P1)	1.6 FSI	BAG; BLP; BLF	85	114	115	2003	2007
A3 Sportback (8PA)	1.4 TFSI	CAXC; CMSA	92	123	125	2007	2013
A3 Sportback (8PA)	1.6 FSI	BLP; BLF	85	114	115	2004	2007

### SEAT

Serie	Model	Engine	Kw	HP	CV	Start	Finish
ALTEA (5P1)	1.4 TSI	CAXC	92	123	125	2007	2015
ALTEA XL (5P5; 5P8)	1.4 TSI	CAXC	92	123	125	2007	2015
CORDOBA (6L2)	1.6 16V	BTS	77	103	105	2006	2009
IBIZA III (6L1)	1.6 16V	BTS	77	103	105	2006	2009
IBIZA IV (6J5; 6P1)	1.6	BTS	77	103	105	2008	2012
IBIZA IV SC (6J1; 6P5)	1.6	BTS	77	103	105	2008	2015
LEON (1P1)	1.4 TSI	CAXC	92	123	125	2007	2012
TOLEDO III (5P2)	1.4 TSI	CAXC	92	123	125	2007	2009

### SKODA

Serie	Model	Engine	Kw	HP	CV	Start	Finish
FABIA II (542)	1.6	BTS; CFNA; CLSA	77	103	105	2007	2014
FABIA II Combi (545)	1.6	BTS; CFNA	77	103	105	2007	2014
OCTAVIA II (1Z3)	1.6 FSI	BLF	85	114	115	2004	2008
OCTAVIA II Combi (1Z5)	1.6 FSI	BLF	85	114	115	2004	2008
ROOMSTER (5J7)	1.6	BTS; CFNA	77	103	105	2006	2015
SUPERB II (3T4)	1.4 TSI	CAXC	92	123	125	2008	2015
SUPERB II Station Wagon (3T) 1.4 TSI	1.4 TSI	CAXC	92	123	125	2009	2015

VW							
Serie	Model	Engine	Kw	HP	CV	Start	Finish
EOS (1F7; 1F8)	1.4 TSI	CAXA	90	121	122	2007	2015

VW							
Serie	Model	Engine	Kw	HP	CV	Start	Finish
EOS (1F7; 1F8)	1.6 FSI	BLF	85	114	115	2006	2008
GOLF PLUS V (5M1; 521)	1.4 FSI	BLN	66	88	90	2005	2006
GOLF PLUS V (5M1; 521)	1.4 TSI	BLG	125	168	170	2006	2008
GOLF PLUS V (5M1; 521)	1.4 TSI	BMY	103	138	140	2006	2008
GOLF PLUS V (5M1; 521)	1.4 TSI	CAXA	90	121	122	2007	2013
GOLF PLUS V (5M1; 521)	1.6 FSI	BLF	85	114	115	2004	2008
GOLF V (1K1)	1.4 FSI	BKG; BLN	66	88	90	2003	2006
GOLF V (1K1)	1.4 TSI	BLG	125	168	170	2005	2008
GOLF V (1K1)	1.4 TSI	BMY	103	138	140	2006	2008
GOLF V (1K1)	1.4 TSI	CAXA	90	121	122	2007	2008
GOLF V (1K1)	1.6 FSI	BAG; BLF; BLP	85	114	115	2003	2008
GOLF V Variant (1K5)	1.4 TSI	BLG	125	168	170	2007	2009
GOLF V Variant (1K5)	1.4 TSI	BMY	103	138	140	2007	2009
GOLF V Variant (1K5)	1.4 TSI	CAXA	90	121	122	2007	2009
JETTA III (1K2)	1.4 TSI	BLG	125	168	170	2006	2010
JETTA III (1K2)	1.4 TSI	BMY	103	138	140	2006	2010
JETTA III (1K2)	1.4 TSI	CAXA	90	121	122	2007	2010
JETTA III (1K2)	1.6 FSI	BLF	85	114	115	2005	2010
PASSAT B6 (3C2)	1.4 TSI	CAXA	90	121	122	2007	2010
PASSAT B6 (3C2)	1.6 FSI	BLF	85	114	115	2005	2008
PASSAT B6 Variant (3C5)	1.4 TSI	CAXA	90	121	122	2007	2010
PASSAT B6 Variant (3C5)	1.6 FSI	BLF	85	114	115	2005	2008
POLO IV (9N ; 9A )	1.4 FSI	AXU	63	84	86	2002	2006
POLO IV (9N ; 9A )	1.6 16V	BTS	77	103	105	2006	2009
TIGUAN (5N )	1.4 TSI	BWK; CAVA; CTHA	110	147	149	2008	2018
TIGUAN (5N )	1.4 TSI 4motion	BWK; CAVA; CTHA	110	147	149	2007	2018
TIGUAN VAN (5N )	1.4 TSI (5N1)	CAVA	110	147	149	2008	2010
TOURAN (1T1; 1T2)	1.4 TSI	BLG; CAVB	125	168	170	2006	2010
TOURAN (1T1; 1T2)	1.4 TSI	BMY; CAVC	103	138	140	2006	2010
TOURAN (1T1; 1T2)	1.6 FSI	BAG; BLF; BLP	85	114	115	2003	2007
TOURAN (1T3)	1.4 TSI	CAVB; CTHB	125	168	170	2010	2015
TOURAN (1T3)	1.4 TSI	CAVC; CTHC	103	138	140	2010	2015
TOURAN VAN (1T1; 1T2)	FSI	BAG; BLF; BLP	85	114	115	2003	2006
TOURAN VAN (1T3)	1.4 TSI	CAVC; CTHC	103	138	140	2010	2015

**DIMENSIONS**

H (Height):	73 mm
OD (Outer Diameter):	66 mm
ID (Inner Diameter):	9 mm
ID2 (Inner Diameter):	33 mm

**Gaskets:**

1 Unit/s (OD/ID)	78 mm / 71 mm
------------------	---------------

**PRESENTATION**

UNITS PER BOX:	24
WEIGHT:	1.9 Kg
VOLUME:	0.01 cbm
EAN13:	5055148201142
ITF14:	85055148201148

