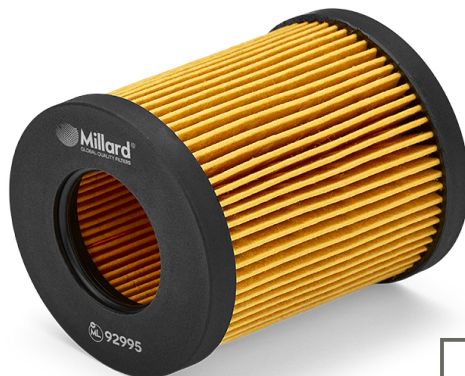


ML 92995 Millard Oil Filter

Catalog Europe, 23/11/2024



DIMENSIONS

H (Height):	75 mm
OD (Outer Diameter):	65 mm
ID (Inner Diameter):	32 mm
ID2 (Inner Diameter):	32 mm

Gaskets:

1 Unit/s (OD/ID)	78 mm / 71 mm
1 Unit/s (OD/ID)	78 mm / 71 mm

PRESENTATION

UNITS PER BOX:	24
WEIGHT:	2.0 Kg
VOLUME:	0.01 cbm
EAN13:	5055148201227
ITF14:	85055148201223



For updated information visit <http://mldr.es/ML-92995>

CROSS REFERENCES

FIAT	71737926	SUZUKI	16510-79J50
KNECHT/MAHLE	OX 386D		

APPLICATIONS (EUROPE)

ALFA ROMEO

Serie	Model	Engine	Kw	HP	CV	Start	Finish
159 (939)	1.9 JTDM 16V (9	939 A2.000	110	147	149	2005	2011
159 (939)	1.9 JTDM 16V (9	939 A8.000; 937 A8.0	100	134	136	2005	2011
159 (939)	1.9 JTDM 8V (93	939 A1.000	88	118	120	2005	2011
159 (939)	1.9 JTDM 8V (93	939 A7.000; 937 A7.0	85	114	115	2005	2011
159 Sportwagon (939)	1.9 JTDM 16V (9	939 A8.000; 937 A8.0	100	134	136	2006	2011
159 Sportwagon (939)	1.9 JTDM 16V (9	939 A2.000	110	147	149	2006	2011
159 Sportwagon (939)	1.9 JTDM 8V (93	937 A7.000	85	114	115	2006	2011
159 Sportwagon (939)	1.9 JTDM 8V (93	939 A1.000	88	118	120	2006	2011

CADILLAC

Serie	Model	Engine	Kw	HP	CV	Start	Finish
BLS	1.9 D	Z19DTH	110	147	149	2006	
BLS Wagon	1.9 D	Z19DTH	110	147	149	2007	

FIAT

Serie	Model	Engine	Kw	HP	CV	Start	Finish
CROMA (194)	1.9 D Multijet	939 A7.000	85	114	115	2005	2011
CROMA (194)	1.9 D Multijet	939 A8.000	100	134	136	2005	2007
CROMA (194)	1.9 D Multijet (19	939 A1.000	88	118	120	2005	2011
CROMA (194)	1.9 D Multijet (19	939 A2.000	110	147	149	2005	2011
CROMA Furgoneta-Station wa	1.9 MJTD (194A)	939 A1.000	88	118	120	2006	2011
GRANDE PUNTO (199)	1.9 D Multijet	199 A5.000	96	129	130	2005	
GRANDE PUNTO (199)	1.9 D Multijet	939 A1.000	88	118	120	2005	
GRANDE PUNTO (199)	1.9 D Multijet	939 A7.000	85	114	115	2006	2009
SEDICI (189)	1.9 D Multijet	D19AA	88	118	120	2006	2011
SEDICI (189)	1.9 D Multijet 4x4	D19AA	88	118	120	2006	2011

OPEL							
Serie	Model	Engine	Kw	HP	CV	Start	Finish
ASTRA H (A04)	1.9 CDTi (L48)	Z 19 DT	88	118	120	2004	2010

OPEL							
Serie	Model	Engine	Kw	HP	CV	Start	Finish
ASTRA H (A04)	1.9 CDTi (L48)	Z 19 DTH	110	147	149	2004	2010
ASTRA H (A04)	1.9 CDTi (L48)	Z 19 DTL	74	99	101	2005	2010
ASTRA H (A04)	1.9 CDTi 16V (L4 Z 19 DTJ		88	118	120	2004	2010
ASTRA H Furgoneta-Station w:	1.9 CDTi (L70)	Z 19 DT	88	118	120	2005	2010
ASTRA H Furgoneta-Station w:	1.9 CDTi (L70)	Z 19 DTH	110	147	149	2004	2010
ASTRA H Furgoneta-Station w:	1.9 CDTi 16V (L7 Z 19 DTJ		88	118	120	2004	2010
ASTRA H GTC (A04)	1.9 CDTi (L08)	Z 19 DT	88	118	120	2005	2010
ASTRA H GTC (A04)	1.9 CDTi (L08)	Z 19 DTH	110	147	149	2005	2010
ASTRA H GTC (A04)	1.9 CDTi (L08)	Z 19 DTL	74	99	101	2006	2010
ASTRA H GTC (A04)	1.9 CDTi 16V (L0 Z 19 DTJ		88	118	120	2005	2010
ASTRA H Station Wagon (A04)	1.9 CDTi (L35)	Z 19 DT	88	118	120	2005	2010
ASTRA H Station Wagon (A04)	1.9 CDTi (L35)	Z 19 DTH	110	147	149	2004	2010
ASTRA H Station Wagon (A04)	1.9 CDTi (L35)	Z 19 DTL	74	99	101	2005	2010
ASTRA H Station Wagon (A04)	1.9 CDTi 16V (L3 Z 19 DTJ		88	118	120	2004	2010
ASTRA H TwinTop (A04)	1.9 CDTi (L67)	Z 19 DTH	110	147	149	2005	2010
SIGNUM Hatchback (Z03)	1.9 CDTi (F48)	Z 19 DT	88	118	120	2004	2008
SIGNUM Hatchback (Z03)	1.9 CDTi (F48)	Z 19 DTH	110	147	149	2004	2008
SIGNUM Hatchback (Z03)	1.9 CDTi (F48)	Z 19 DTL	74	99	101	2005	2008
VECTRA C (Z02)	1.9 CDTi (F69)	Z 19 DT	88	118	120	2004	2009
VECTRA C (Z02)	1.9 CDTi (F69)	Z 19 DTH	110	147	149	2004	2008
VECTRA C (Z02)	1.9 CDTi (F69)	Z 19 DTL	74	99	101	2005	2008
VECTRA C GTS (Z02)	1.9 CDTi (F68)	Z 19 DT	88	118	120	2004	2009
VECTRA C GTS (Z02)	1.9 CDTi (F68)	Z 19 DTH	110	147	149	2004	2008
VECTRA C GTS (Z02)	1.9 CDTi (F68)	Z 19 DTL	74	99	101	2005	2008
VECTRA C Station Wagon (Z0	1.9 CDTi (F35)	Z 19 DT	88	118	120	2004	2009
VECTRA C Station Wagon (Z0	1.9 CDTi (F35)	Z 19 DTH	110	147	149	2004	2008
VECTRA C Station Wagon (Z0	1.9 CDTi (F35)	Z 19 DTL	74	99	101	2005	2008
ZAFIRA - ZAFIRA FAMILY B (1/	1.9 CDTi (M75)	Z 19 DT	88	118	120	2005	2015
ZAFIRA - ZAFIRA FAMILY B (1/	1.9 CDTi (M75)	Z 19 DTH	110	147	149	2005	2015
ZAFIRA - ZAFIRA FAMILY B (1/	1.9 CDTi (M75)	Z 19 DTL	74	99	101	2005	2010
ZAFIRA B Furgoneta-monovolt	1.9 CDTi VAN (M	Z 19 DT	88	118	120	2005	2015
ZAFIRA B Furgoneta-monovolt	1.9 CDTi VAN (M	Z 19 DTH	110	147	149	2005	2015

SAAB							
Serie	Model	Engine	Kw	HP	CV	Start	Finish
9-3 (YS3F; E79; D79; D75)	1.9 TiD	Z 19 DT	88	118	120	2004	2015
9-3 (YS3F; E79; D79; D75)	1.9 TiD	Z 19 DTH	110	147	149	2004	2015
9-3 Descapotable (YS3F)	1.9 TiD	Z 19 DT	88	118	120	2004	2015
9-3 Descapotable (YS3F)	1.9 TiD	Z 19 DTH	110	147	149	2006	2015
9-3 Station Wagon (E50)	1.9 TiD	Z 19 DT	88	118	120	2005	2015
9-3 Station Wagon (E50)	1.9 TiD	Z 19 DTH	110	147	149	2005	2015
9-5 (YS3E)	1.9 TiD	Z 19 DTH	110	147	149	2006	2009
9-5 Station Wagon (YS3E)	1.9 TiD	Z 19 DTH	110	147	149	2006	2009

SUZUKI							
Serie	Model	Engine	Kw	HP	CV	Start	Finish
SX4 (EY; GY)	1.9 DDiS (RW41S	D19AA	88	118	120	2006	
SX4 (EY; GY)	1.9 DDiS 4x4 (RV	D19AA	88	118	120	2006	

DIMENSIONS

H (Height):	75 mm
OD (Outer Diameter):	65 mm
ID (Inner Diameter):	32 mm
ID2 (Inner Diameter):	32 mm

Gaskets:

1 Unit/s (OD/ID)	78 mm / 71 mm
1 Unit/s (OD/ID)	78 mm / 71 mm

PRESENTATION

UNITS PER BOX:	24
WEIGHT:	2.0 Kg
VOLUME:	0.01 cbm
EAN13:	5055148201227
ITF14:	85055148201223

